

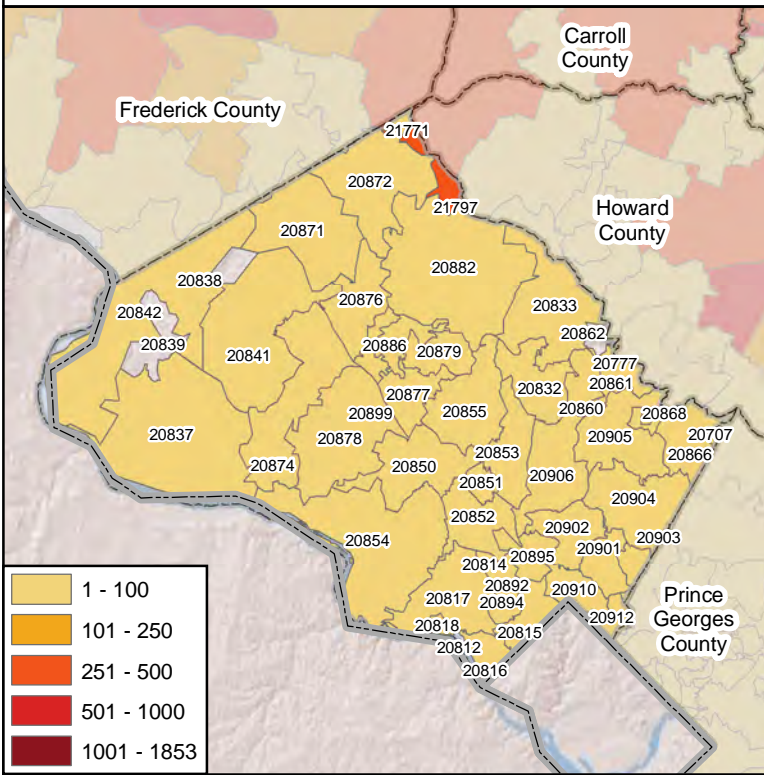


Maryland Poison Center
University of Maryland School of Pharmacy

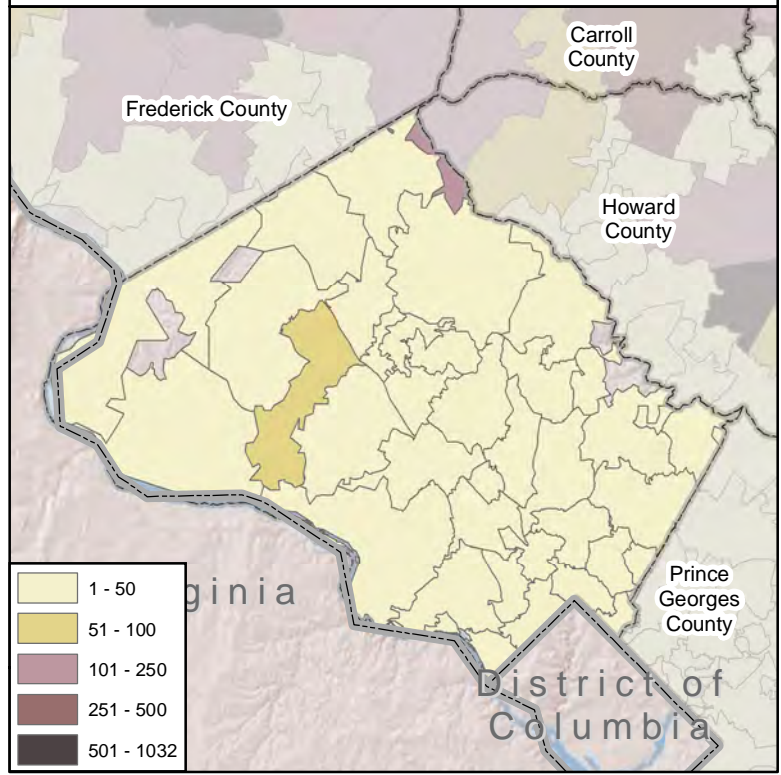
Calls By Call Type

Montgomery County Calls By Zipcode
January 1, 2009 - December 31, 2009

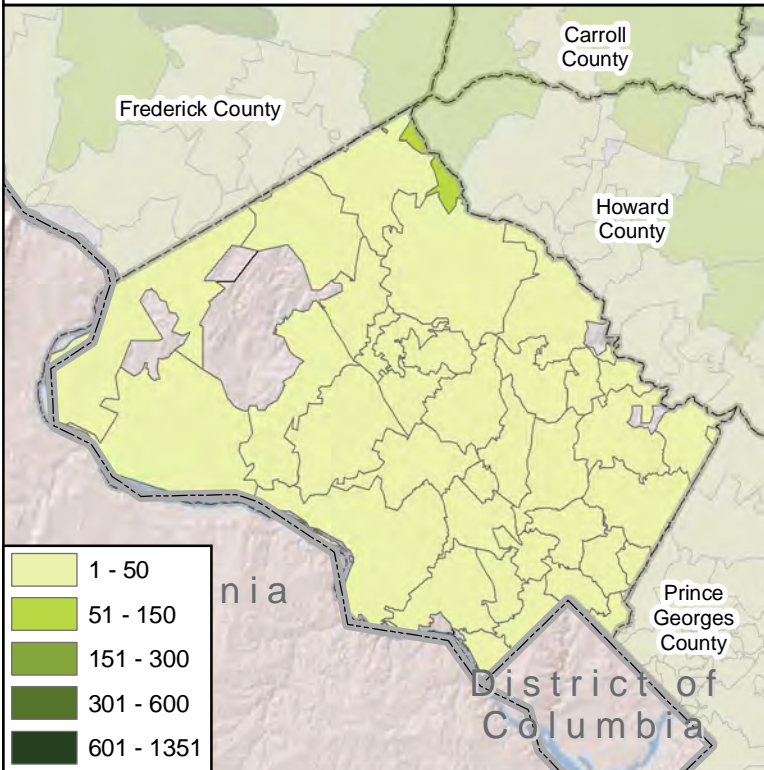
Total Calls



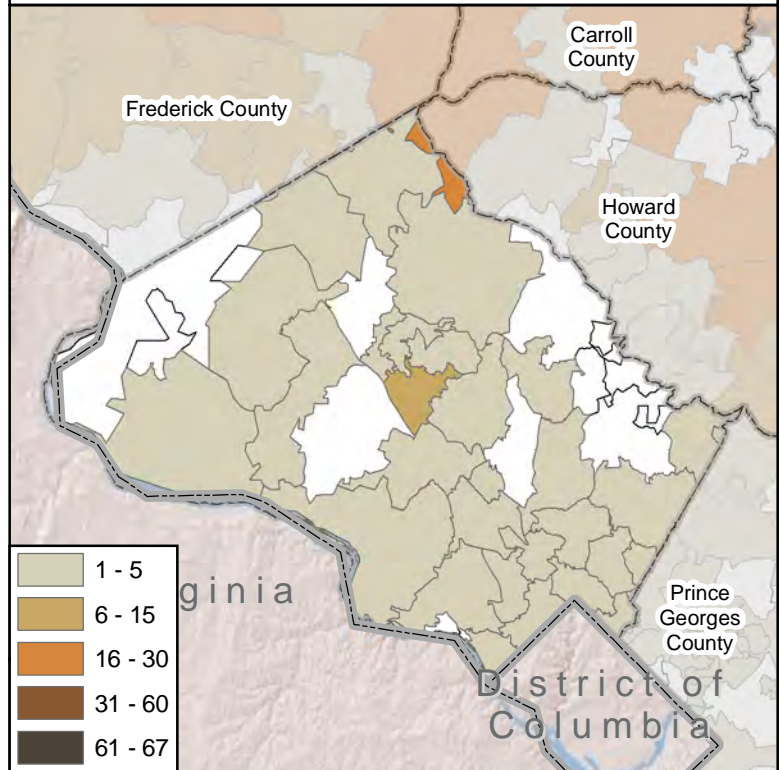
Human Exposure Calls



Information Calls



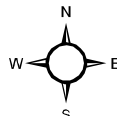
Animal Exposure Calls



Map Prepared By:
Maryland Poison Center
University of Maryland
Office Level One
220 Arch St
Baltimore, MD 21201

Emergency Hotline: 1-800-222-1222
General Information: 410-706-7604

Date Prepared: August 2010



Notes:

1. Human and Animal Exposures: Confirmed non-exposures are excluded.
2. Information Calls are drug identification calls to the Maryland Poison Center where no exposure has occurred.
3. Numbers for Montgomery and Prince George's counties reflect calls to the MPC only. The 800-222-1222 number automatically connects callers from these counties to the National Capital Poison Center in Washington, D.C. Some callers reach the MPC by dialing local telephone numbers still in service.