

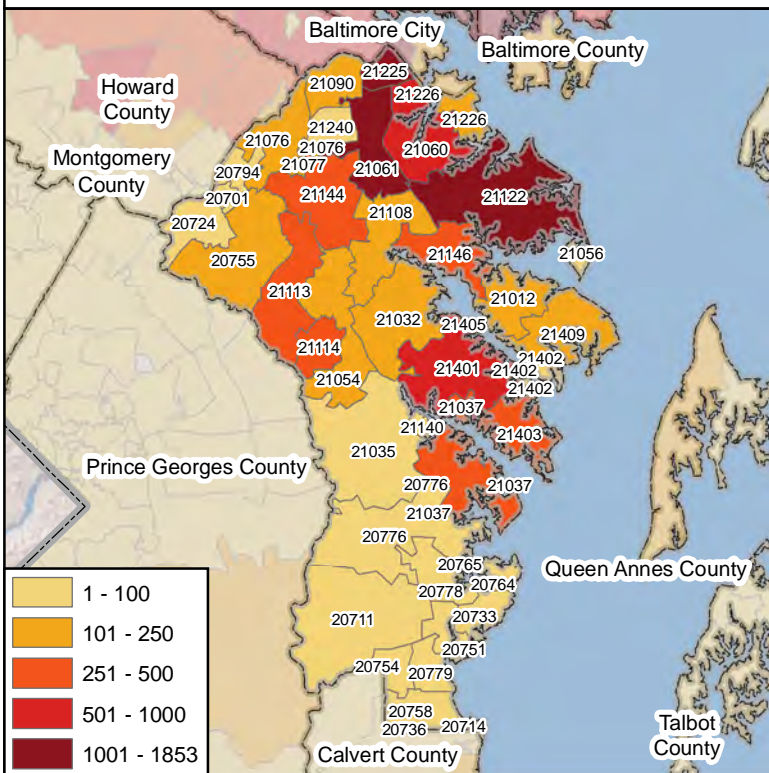


**Maryland Poison Center**  
University of Maryland School of Pharmacy

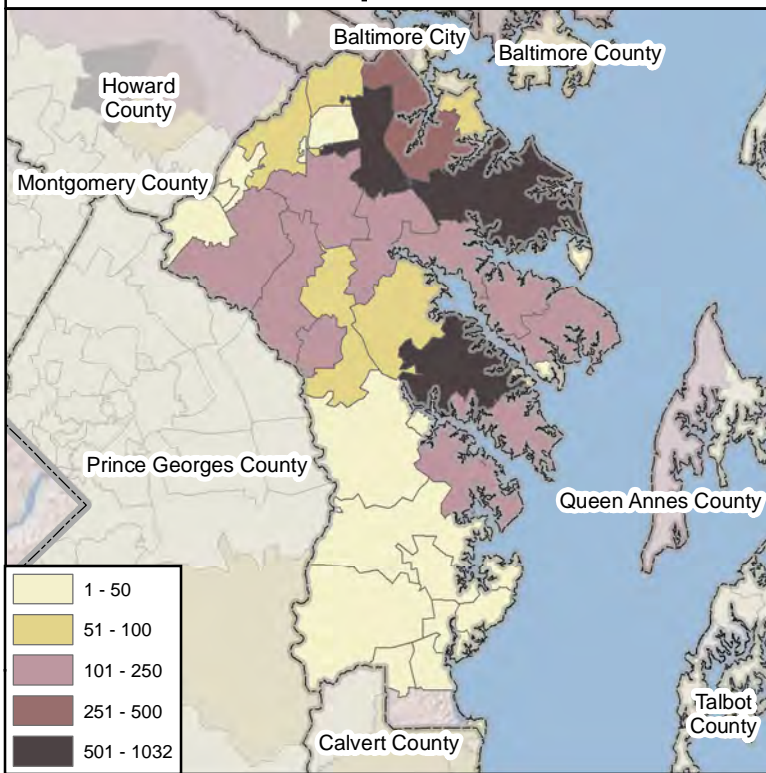
# Calls By Call Type

Anne Arundel County Calls By Zipcode  
January 1, 2009 - December 31, 2009

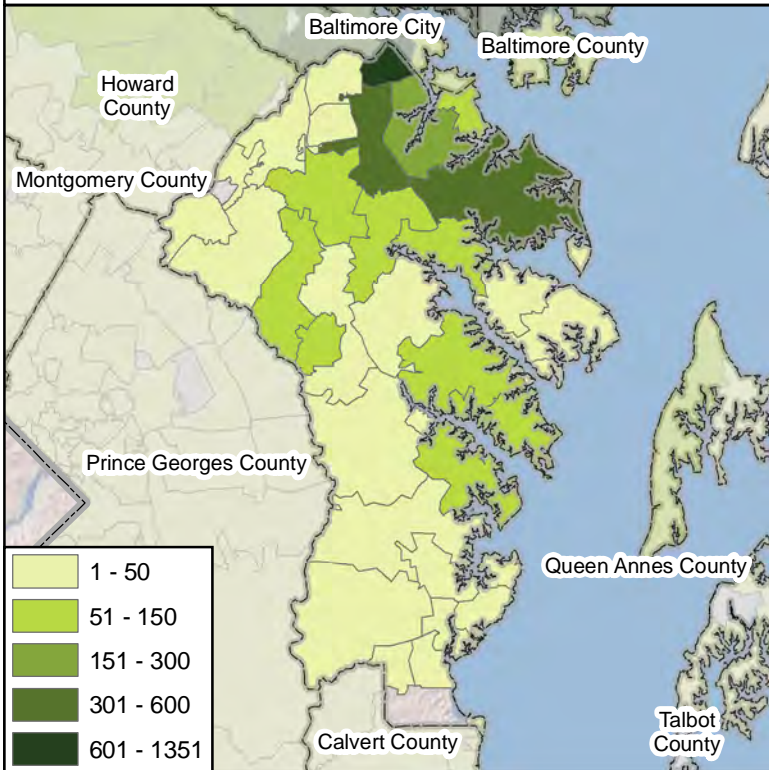
## Total Calls



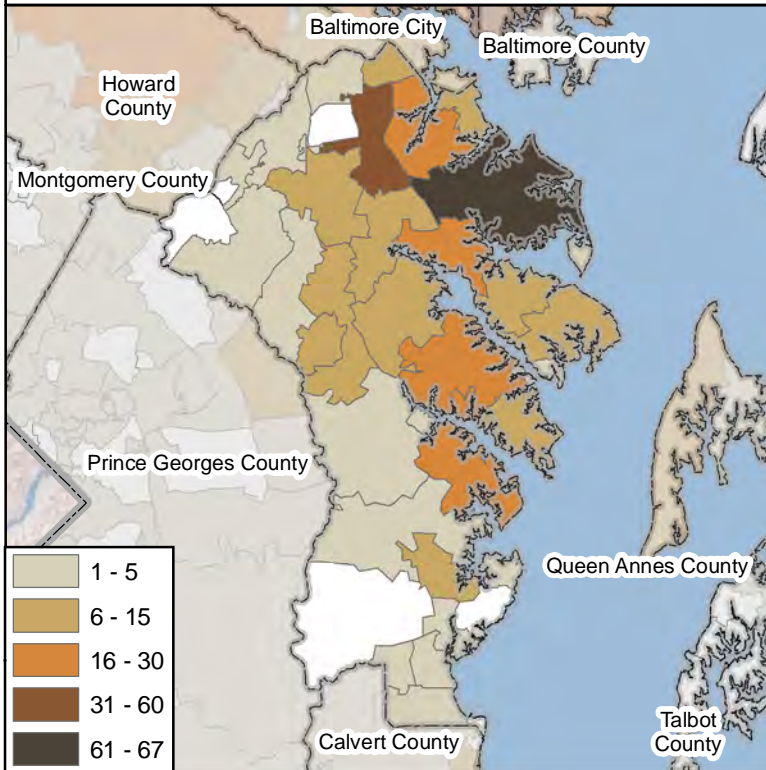
## Human Exposure Calls



## Information Calls



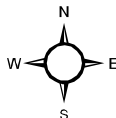
## Animal Exposure Calls



Map Prepared By:  
**Maryland Poison Center**  
University of Maryland  
Office Level One  
220 Arch St  
Baltimore, MD 21201

Emergency Hotline: 1-800-222-1222  
General Information: 410-706-7604

Date Prepared: August 2010



Notes:

1. Human and Animal Exposures: Confirmed non-exposures are excluded.
2. Information Calls are drug identification calls to the Maryland Poison Center where no exposure has occurred.