



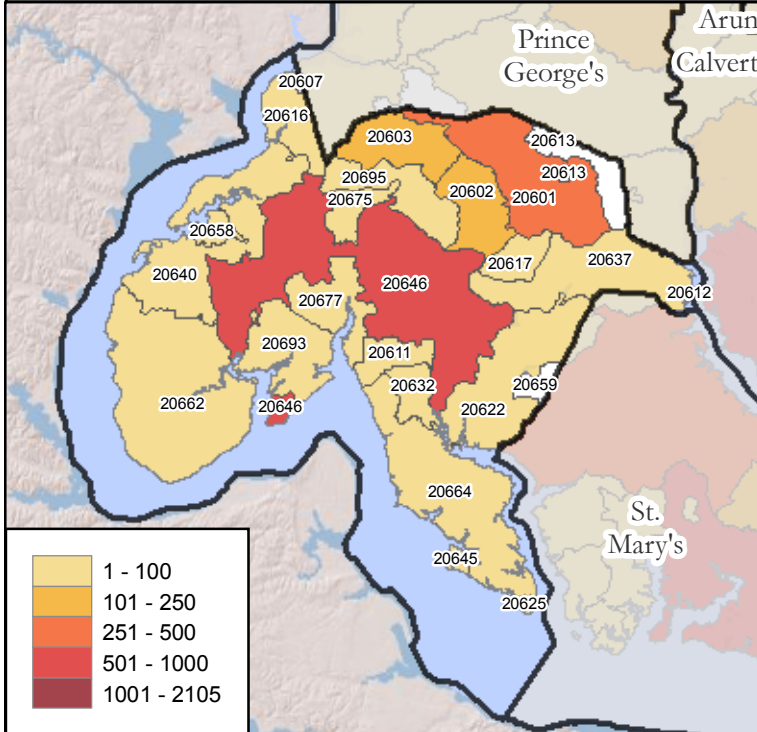
Maryland Poison Center

University of Maryland School of Pharmacy

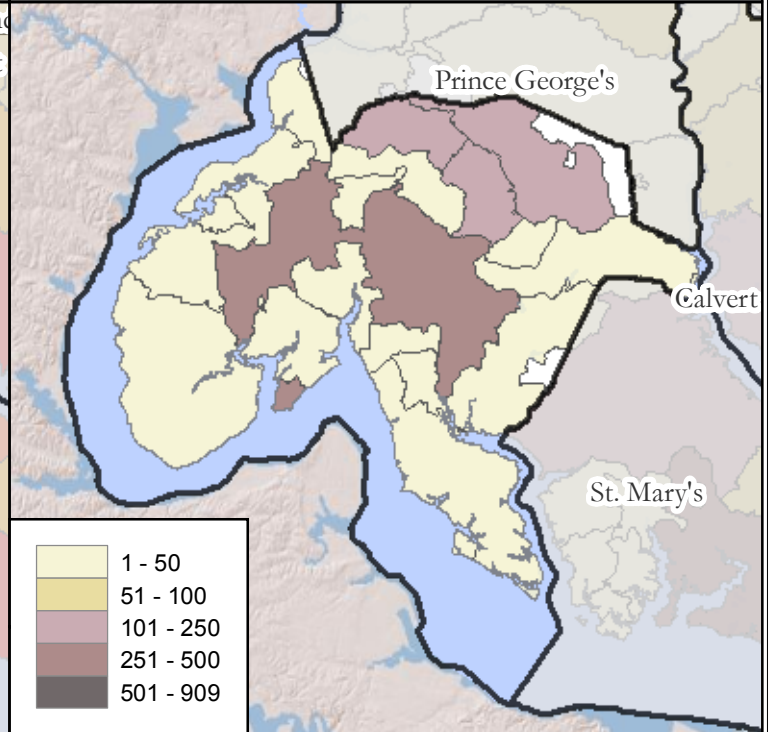
Calls By Call Type

Charles County Calls By Zipcode
January 1, 2008 - December 31, 2008

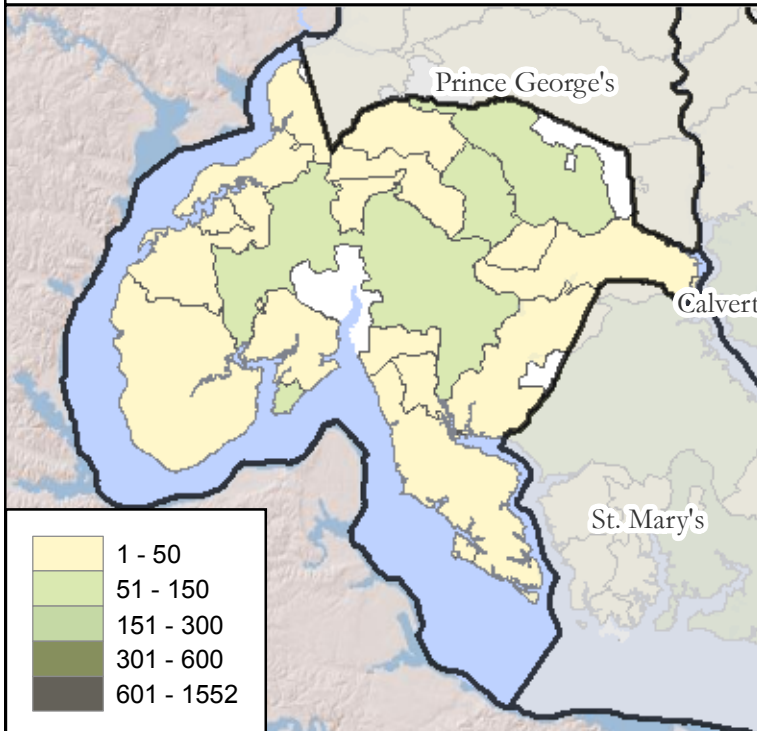
Total Calls



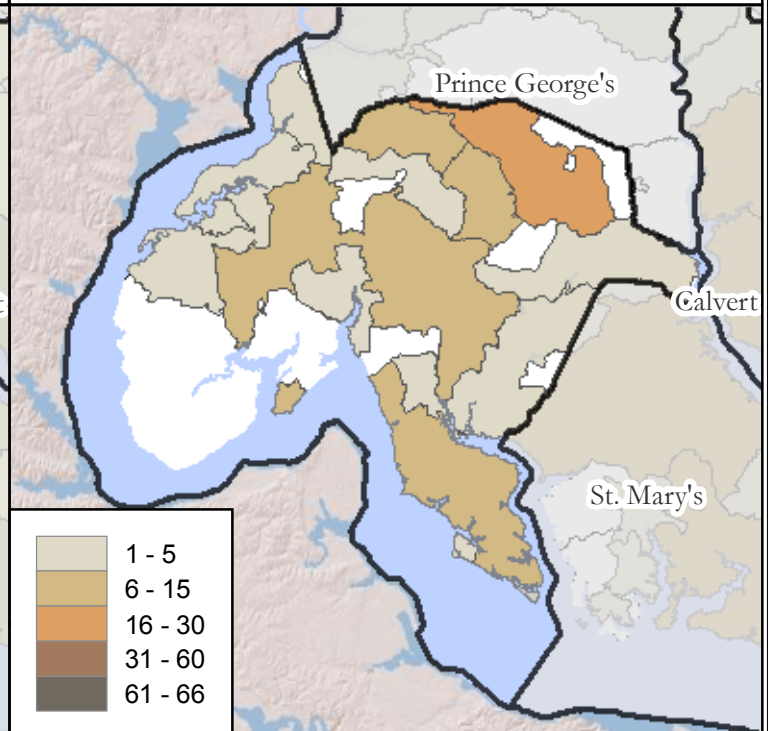
Human Exposures



Information Calls



Animal Exposures



Map Prepared By:
Maryland Poison Center
University of Maryland School of Pharmacy
Office Level One
220 Arch Street
Baltimore, Maryland 21201

Emergency Hotline: 1-800-222-1222
General Information: 410-706-7604

Date Prepared: April 2009

NOTES:
¹Human and Animal Exposures: Confirmed non-exposures are excluded.
²Information Calls are drug identification calls to the Maryland Poison Center where no exposure has occurred.

